

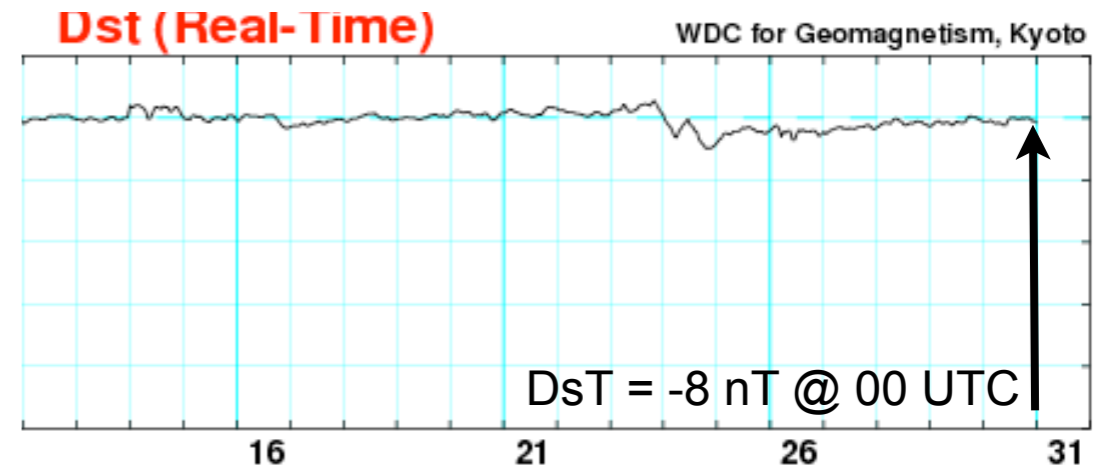
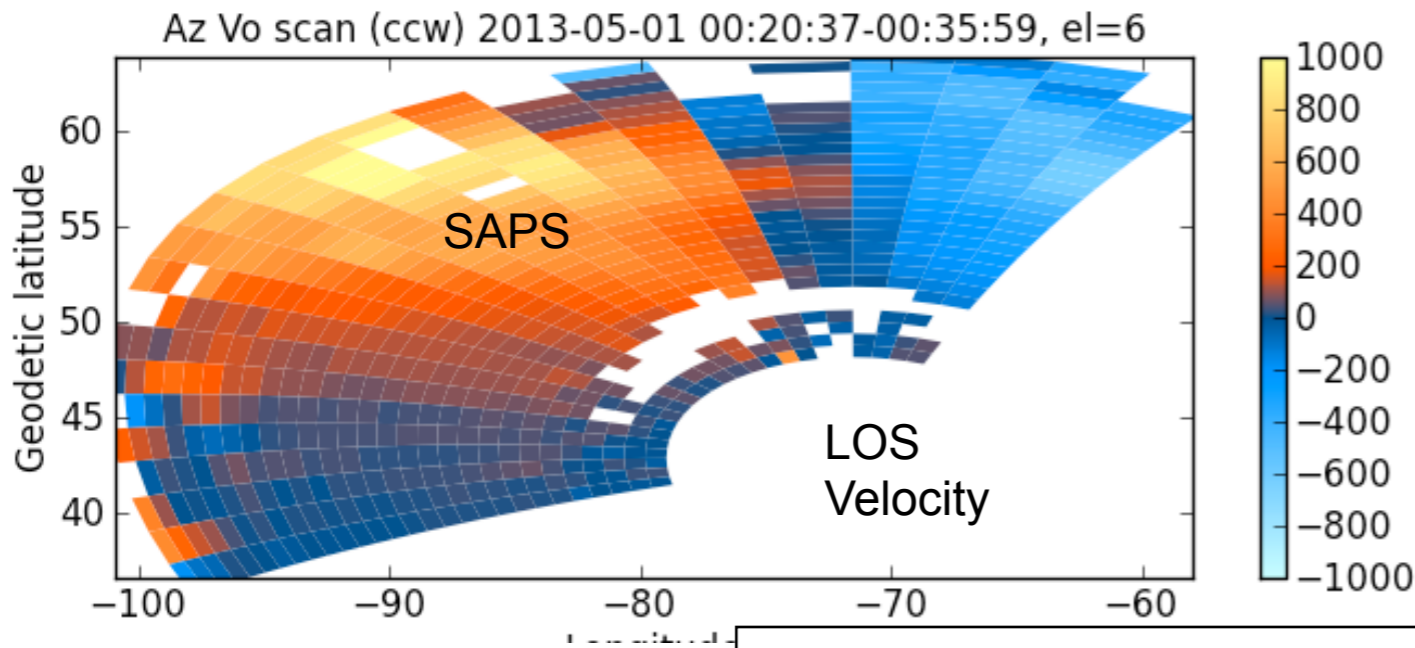
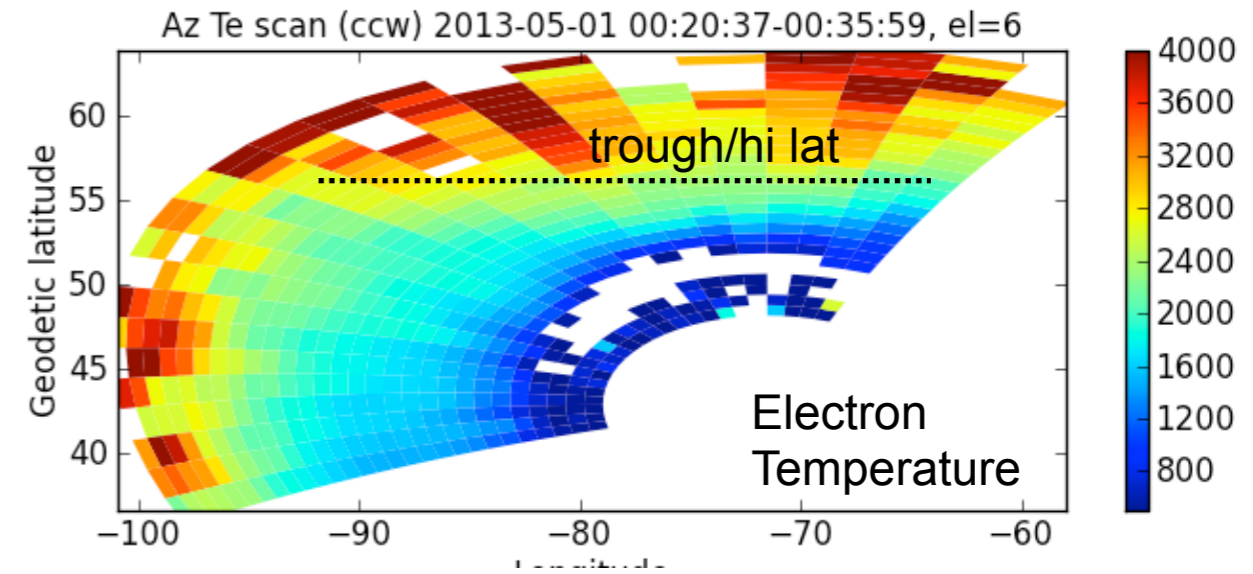
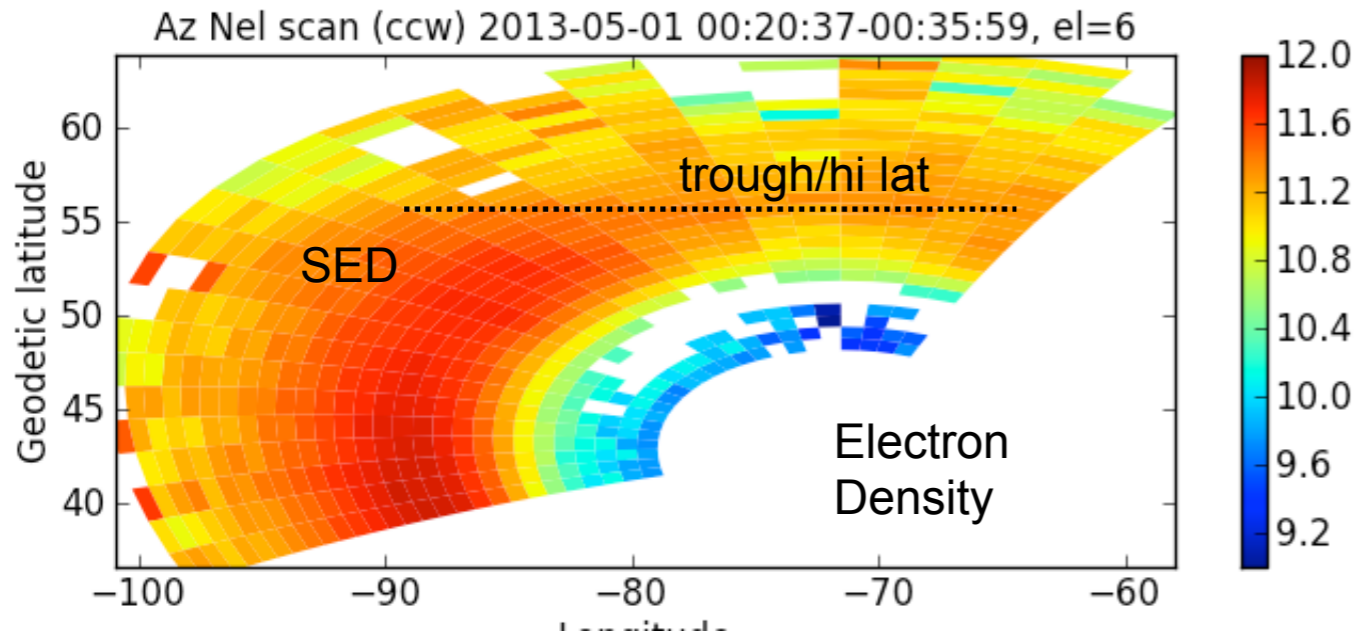
SAPS or Not?

Dead quiet magnetic conditions

Data taken during a Van Allen Probes conjunction
(not triggered by magnetic activity)

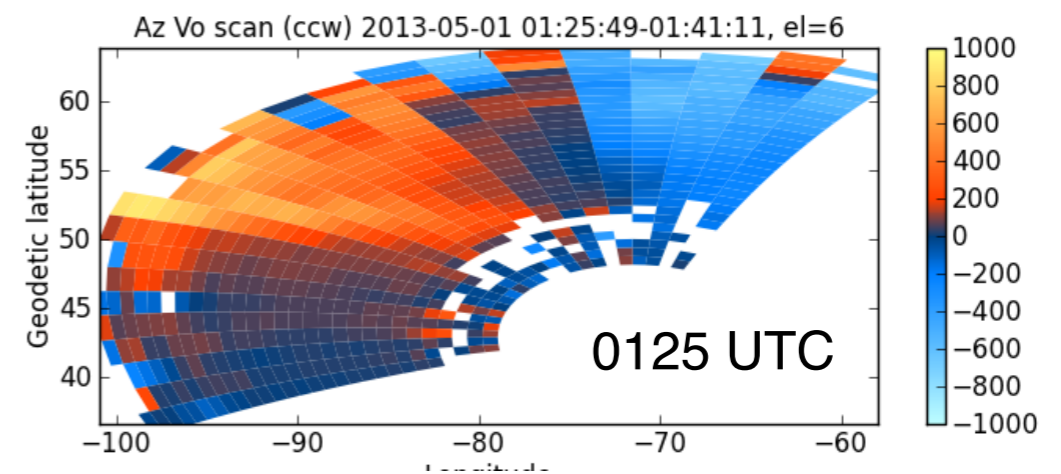
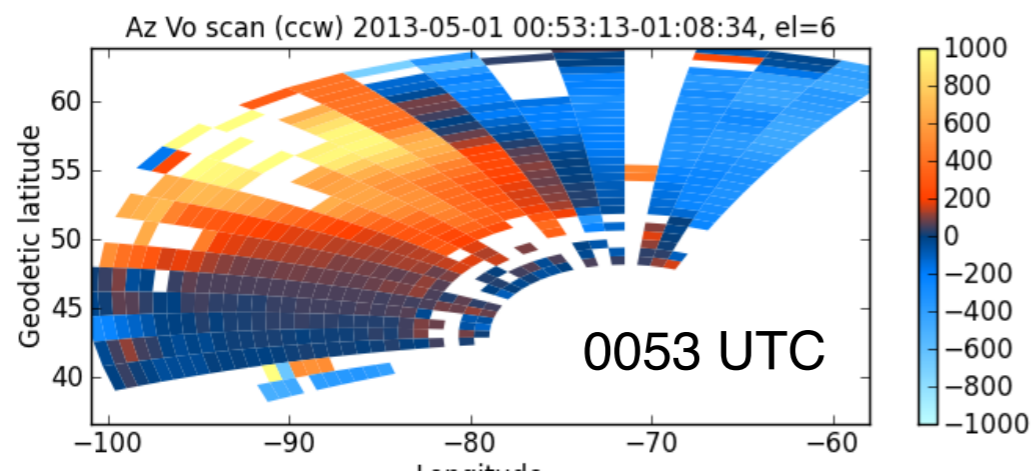
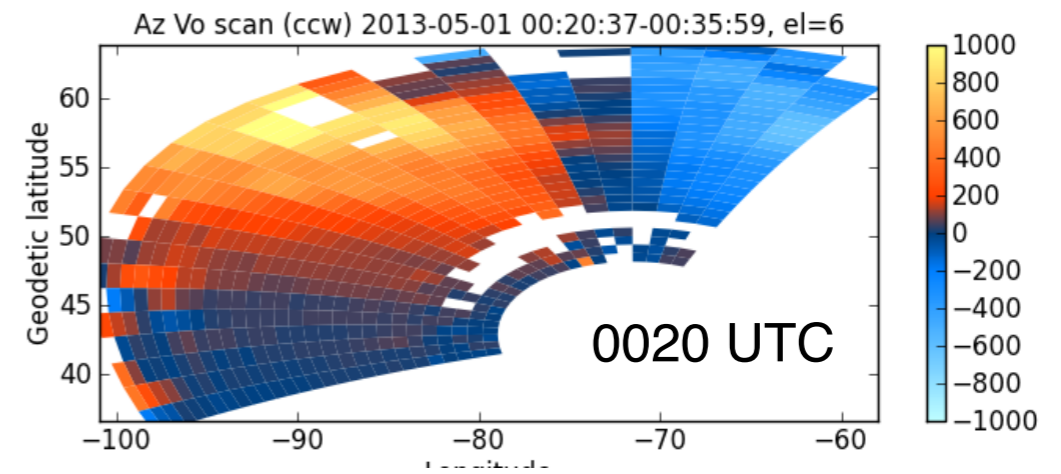
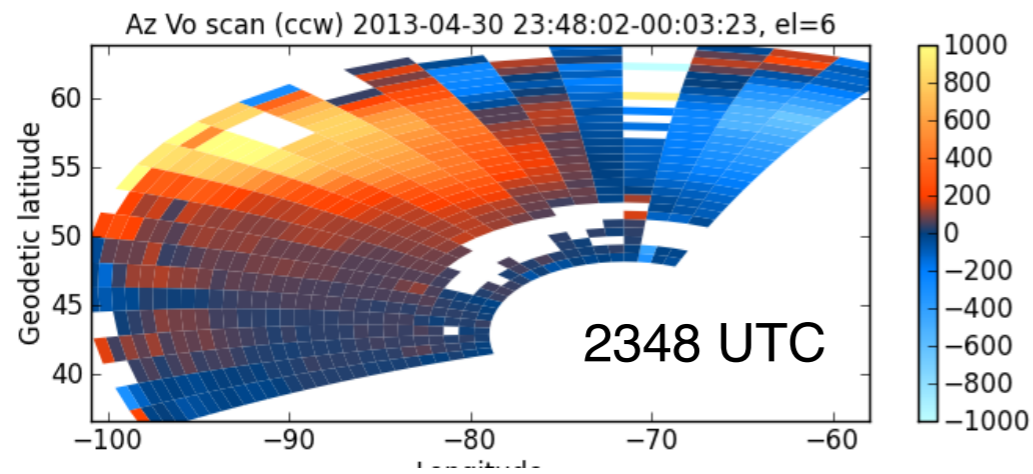
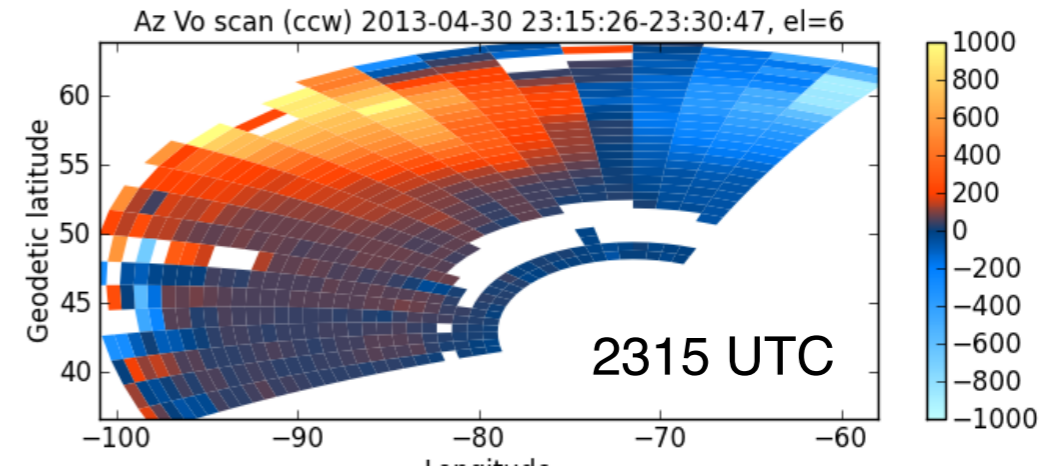
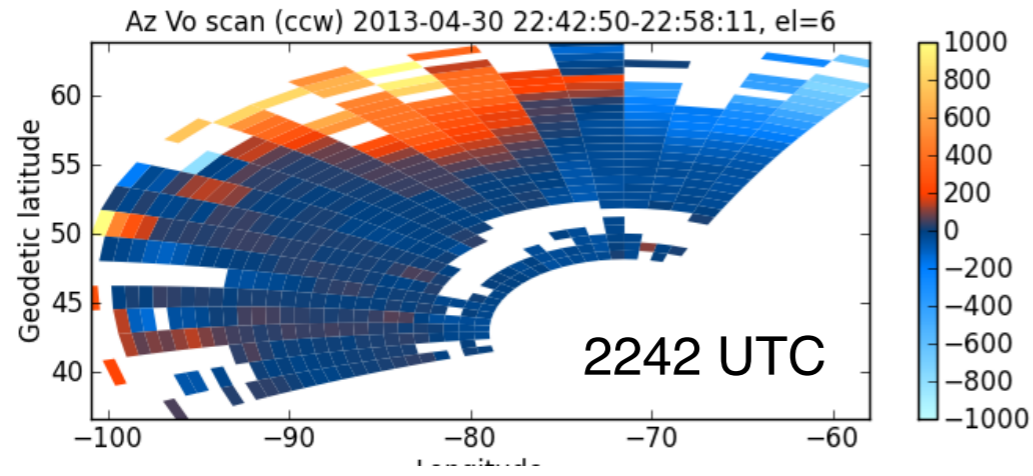
Unfortunately, only 4 hours available.

Millstone Hill: 2013-04-30 / 2013-05-01

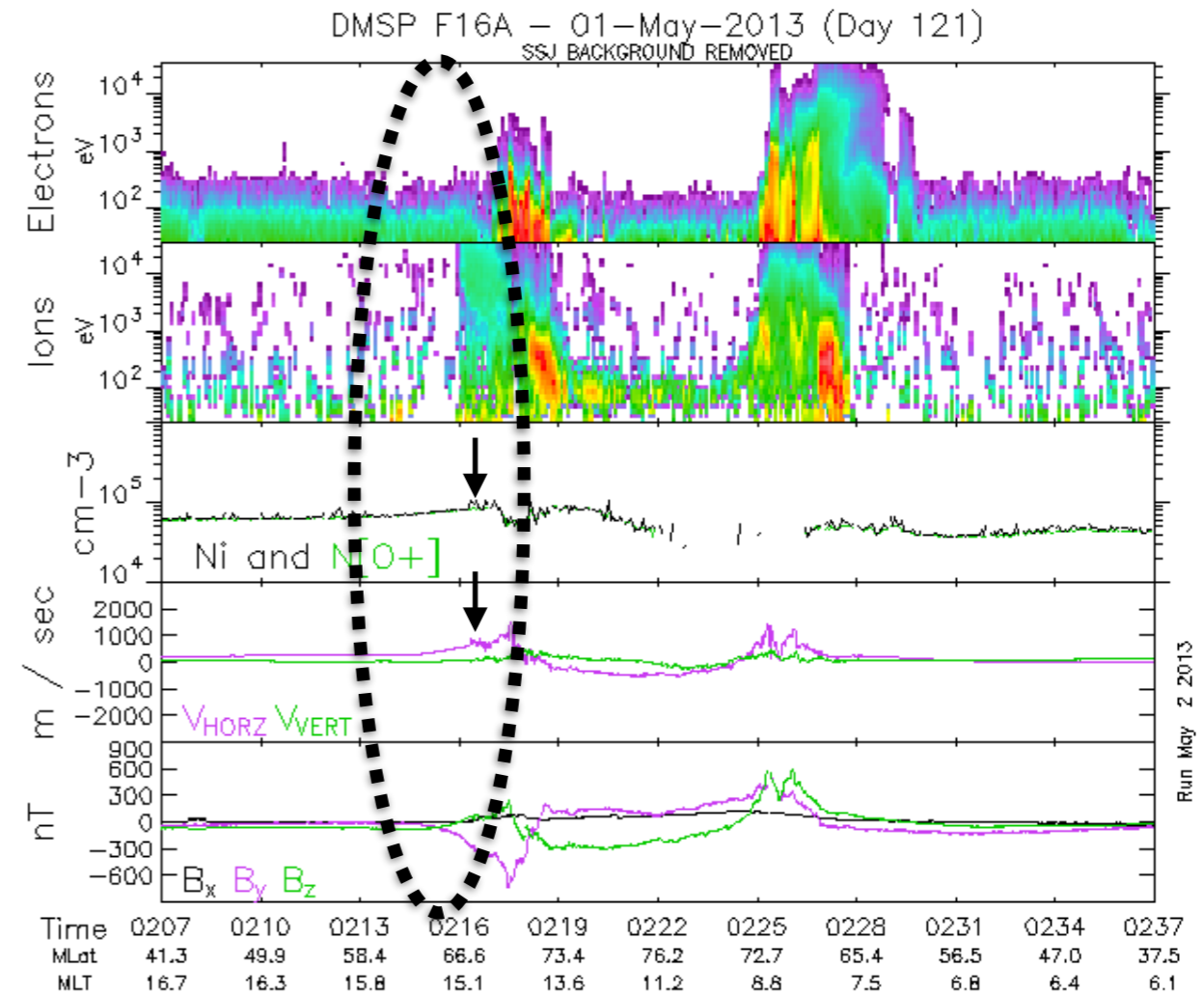
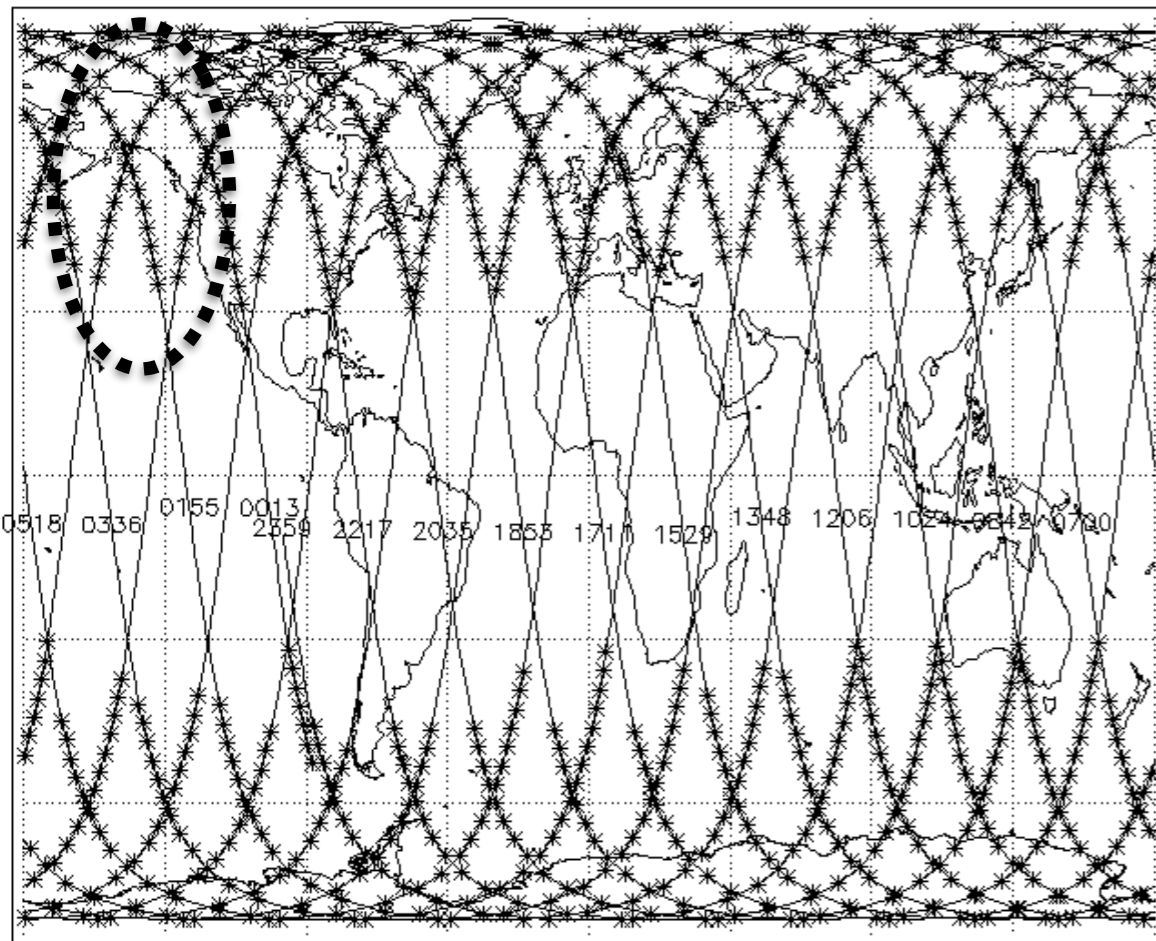


Sunward Horizontal Flux > 2E14 m⁻² s⁻¹

SAPS of 1 km/s+, not in just one scan



DMSP F16 Precipitation Boundaries

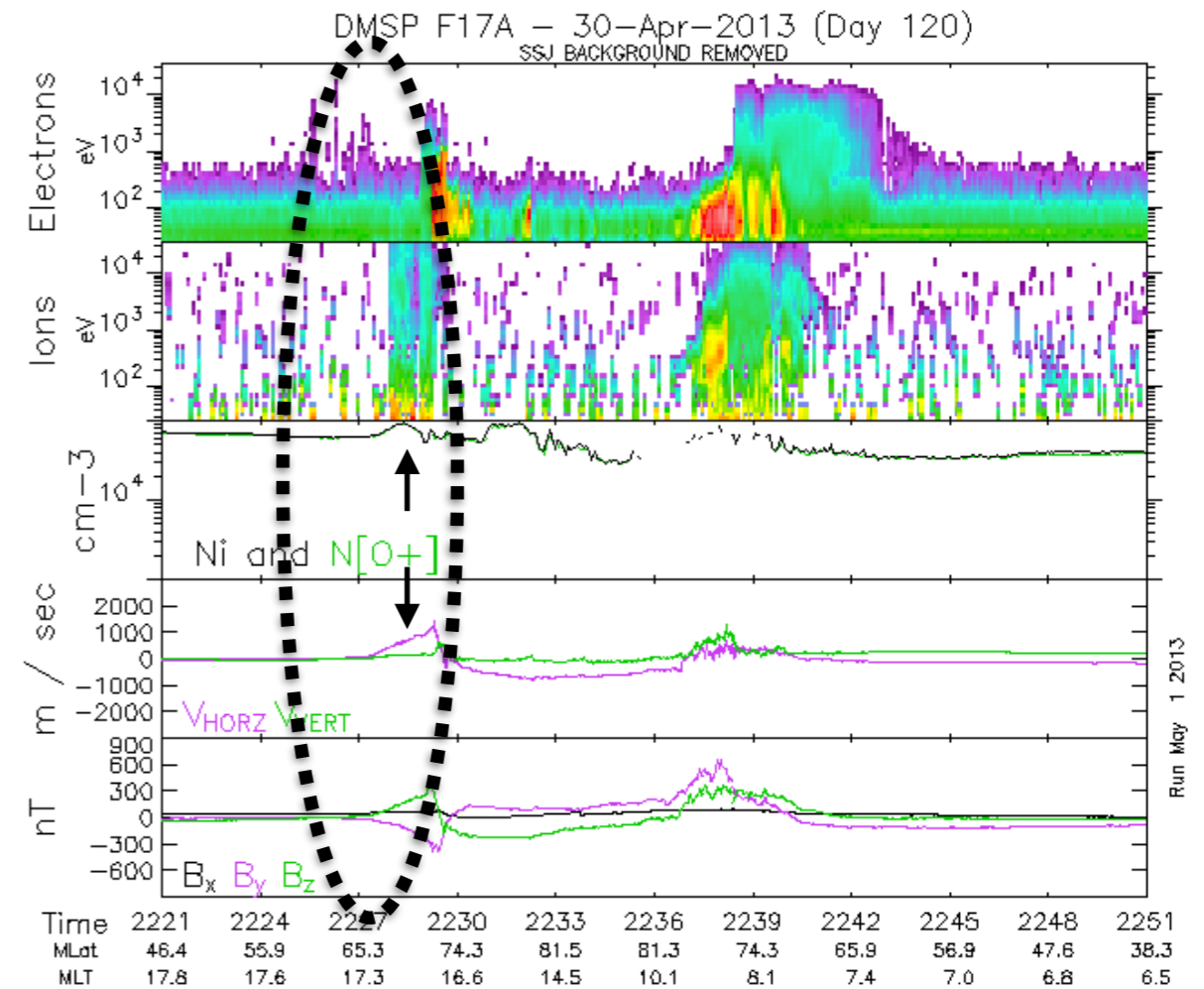
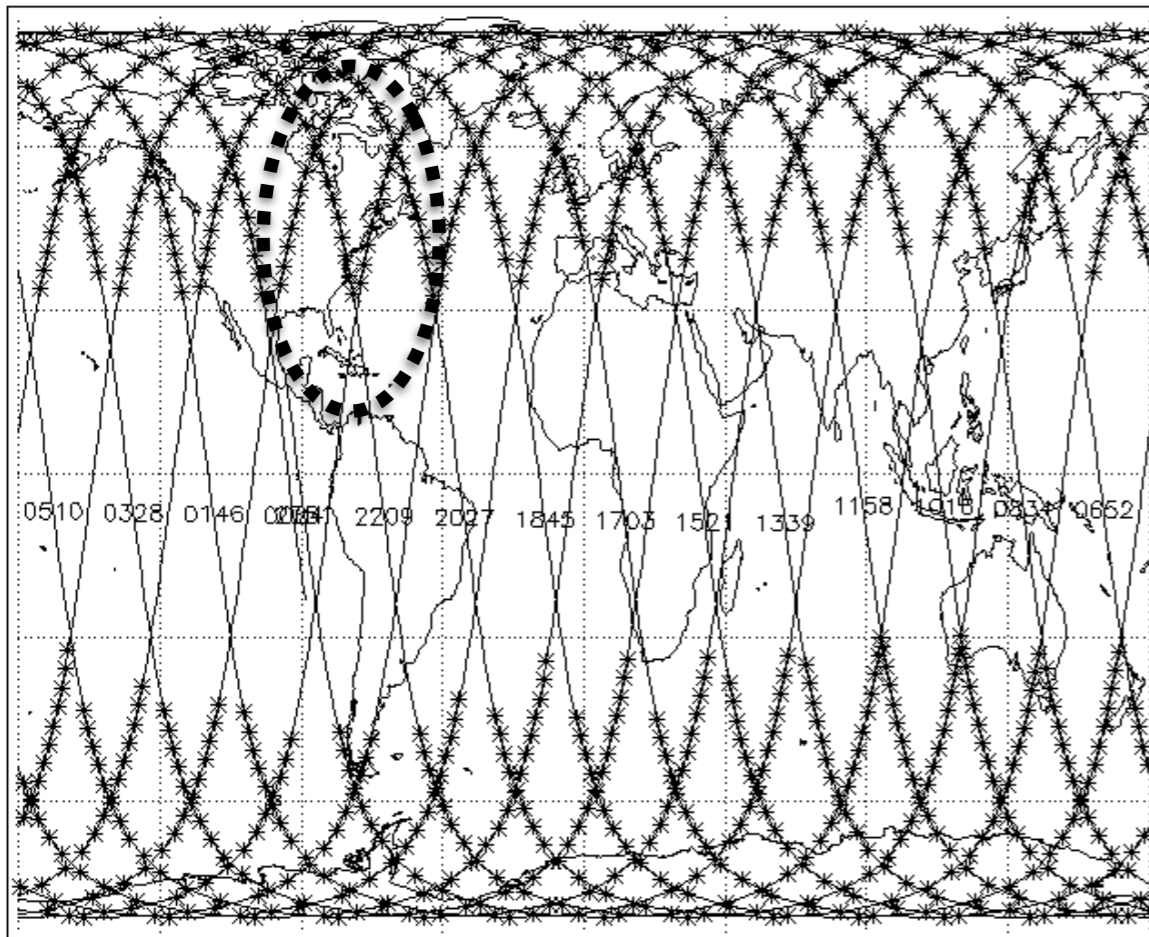


Definitely moderate SAPS + SED

Sub auroral (notice electron precip boundary)

About 2 hours in MLT west of MHO measurements, and just after MHO concludes

DMSP F17 Precipitation Boundaries



Pronounced SAPS + SED at ~18 MLT just before MHO measurements
 Sub auroral (notice electron precip boundary)
 Compared with F16 - strong longitudinal effects? MLT evolution? Both?